

Weather Defender

# Tutorial 7: Team Tools

Step-by-Step Guide

Trial Version

Software Version 1.1

Upgrade today at [www.weatherdefender.com](http://www.weatherdefender.com)  
Copyright © 2009 SWIFT Weather. All rights reserved.

## Lesson 7: Team Tools Preview



A video of this tutorial is available at: [www.weatherdefender.com/tutorials.aspx](http://www.weatherdefender.com/tutorials.aspx)

In this lesson, you will learn:

- What are Team Tools?
- Why use this feature?
- How it works
- SPECIAL OFFER

### What are Team Tools?

**Team tools** in Weather Defender enable you to chat and interact with other users in real-time.

### Why use this feature?

**Team tools** allow you to share and receive observations about the current weather situation. With **Team tools**, you can learn more about an approaching storm system than raw weather data will tell you.

Depending on who else is online, you may also get live field reports from trained observers or advice from meteorologists.

### How it works:

To start, click the **Chat** button on the **Team** toolbar. A new window will appear as your account is connected to the chat room.

The first time you chat, you will be presented with a Chat Room selector. Select any room you want, you can always switch rooms later.

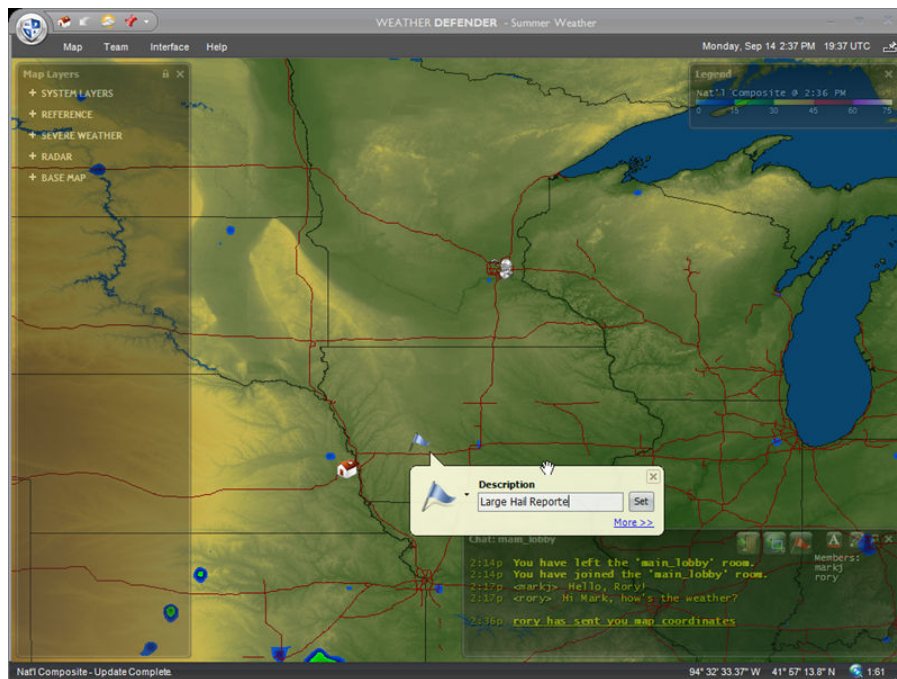
When in the chat room, you will see the positions of other users on your own map. And these users will see you on their map. Hover over these positions to read names and see status updates.

Whenever a message is received, it will be displayed next to their icon on your map as a chat bubble. It will also be displayed in the Chat window.

To share a message, type in the **Chat window** as shown and press **Enter** to send. Your message will be shared with everyone in the chat room.

The **Team tab** contains a few other collaboration tools:

- **Share View** – sends your map coordinates to everyone in the room. If they click on the link in the Chat window, their map will immediately be repositioned to the same coordinates as yours, so they can see exactly what you are seeing.



- **Place Marker** – works the same way as the Custom Points tool, except it is shared among all users in the chat room. Click the **Marker button on the Team tab**, then click again on the map where you want to add your point. **Enter a description** and select a flag color. Then click **Set** to place your marker. Now your marker will be added to the map – and everyone else's map.

### **SPECIAL OFFER:**

Today is your last chance to upgrade to the full version of Weather Defender and get \$100 off the retail price. Go to [weatherdefender.com](http://weatherdefender.com) to upgrade.