

Weather Defender

Tutorial 5: Retail Maps

Step-by-Step Guide

Trial Version

Software Version 1.1

Upgrade today at www.weatherdefender.com
Copyright © 2009 SWIFT Weather. All rights reserved.

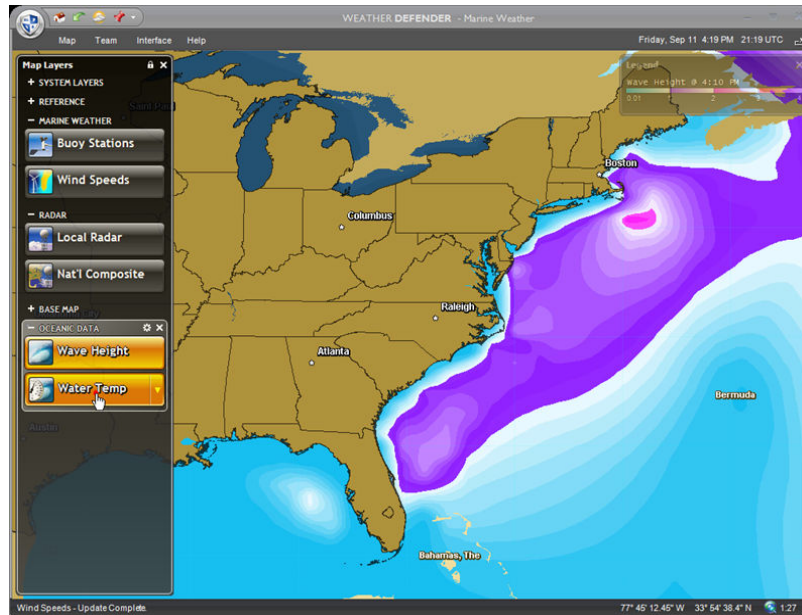
Lesson 5: Retail Maps Preview



A video of this tutorial is available at: www.weatherdefender.com/tutorials.aspx

In this lesson, you will learn:

- Learn about the available maps in the full version



Available Maps

In the trial version, you only have access to the Summer Weather and Winter Weather Maps. In the full retail version, you will have comprehensive access to the following:

- **Pilot Weather**

A map with aviation-oriented layers such as:

- Airports
- METARs
- Flight Rules
- Visibility
- Weather Fronts

- **Marine Weather**

A map with nautical layers like:

Upgrade today at www.weatherdefender.com

Copyright © 2009 SWIFT Weather. All rights reserved.

- Sea Buoy Stations
- Wind Speeds
- Wave Height And Water Temperature

- **Ranger Weather**

A map with unique layers such as:

- National Parks
- Wildfires & Forest Fire detection
- Earthquakes

- **High Contrast Weather**

An alternate version of the default Summer Weather map, but in high-contrast colors for easier viewing

- And for the hobbyists out there, the **Radio Weather** map integrates weather with Amateur Radio data like:
 - Repeater towers
 - APRS positions
 - Local Storm Reports

Don't delay: upgrade your account today and gain access to all the features that Weather Defender has to offer. Plus, receive \$100 off the activation price if you order before the end of your trial.

To get the discount, click on the **Upgrade Now** button on the main interface, or visit **weatherdefender.com** at any time during your trial to obtain the discount.