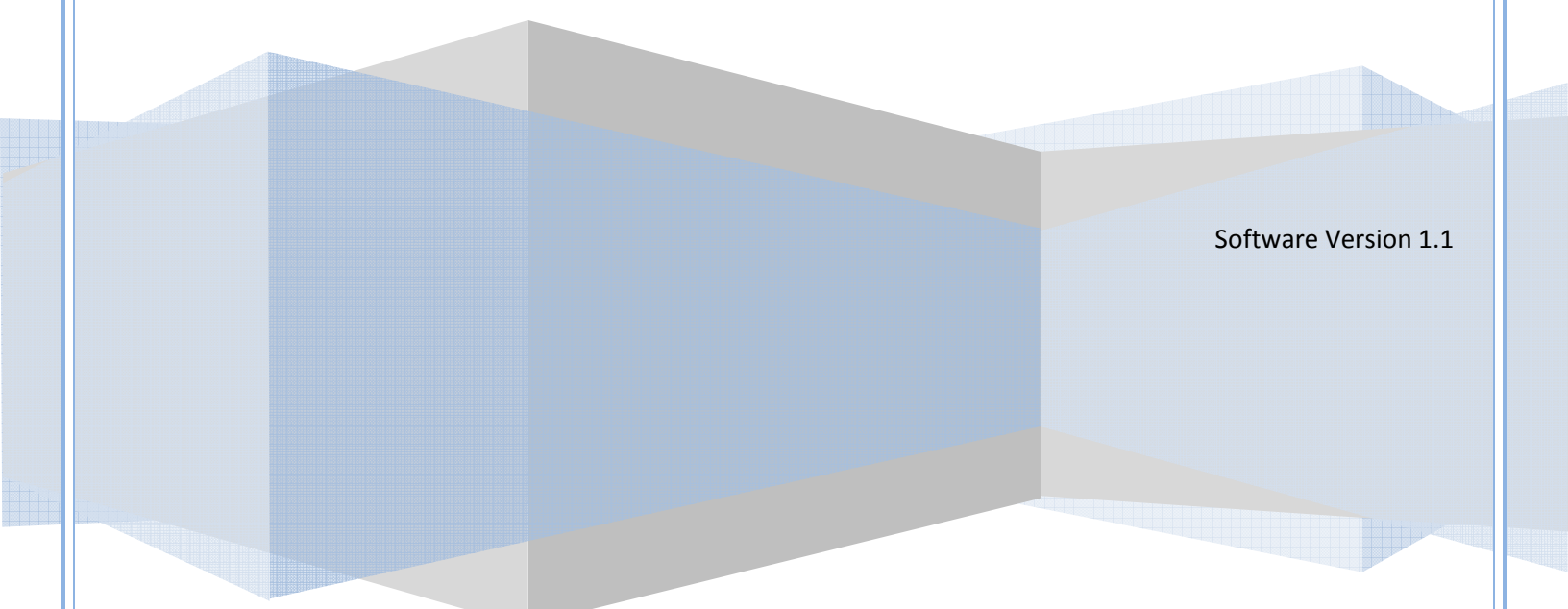


Weather Defender

# Tutorial 1: Alert Perimeters

Step-by-Step Guide

Trial Version



Software Version 1.1

Upgrade today at [www.weatherdefender.com](http://www.weatherdefender.com)  
Copyright © 2009 SWIFT Weather. All rights reserved.

## Lesson 1: Alert Perimeters



A video of this tutorial is available at: [www.weatherdefender.com/tutorials.aspx](http://www.weatherdefender.com/tutorials.aspx)

In this lesson, you will learn:

- How to set or move your Home indicator on the map
- How to create Perimeters around your home location so that you will be notified when specific threats are entering your safe zone
- How to set your monitoring options

### **Setting Your Home Location:**

The first time you start Weather Defender, you should see a map centered on your region of the country with a House icon at the center.

This is your **home location** based on the address you entered when creating your account.

If you do not see a House icon or the map is not displaying the correct region, you may change your Home Location by selecting the **Set Home** tool from the **Map** toolbar.

Then click anywhere on the map to set your new Home location.

You can also set your new Home Location by clicking on the **Set Home** drop down menu. From here, you can enter either your latitude & longitude coordinates or your street address.

### **Creating Perimeters**

When your Home indicator is confirmed, you can create a Perimeter around that location.

First, select the **Perimeter** tool from the **Map** toolbar.

Then, position your mouse so that the little arrow in the upper left of the cursor is over the center of your Home location.

Press and hold the left mouse button and move the mouse outward, away from your Home. As you drag your mouse, a green circle is displayed with corresponding range in miles. This is your Perimeter boundary.

You can set it to any range you want, however 20 to 40 miles will give you sufficient warning for most storms.

Now release the left mouse button to create your Perimeter.

## **Monitoring Options**

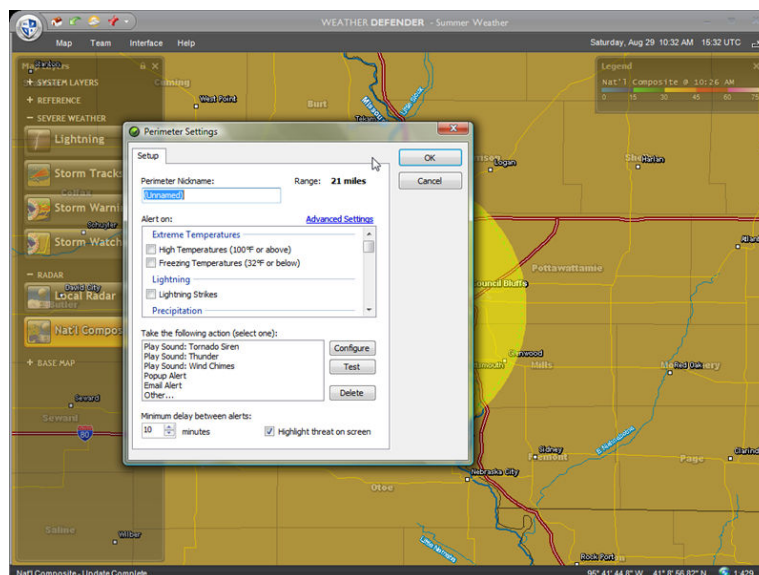
After you create your perimeter, a screen will display with several fields. This is where you will select the types of threats you want monitor, as well how you want to be alerted.

First, enter a nickname for the perimeter such as “Home-to-Work” or “My Safe Zone.”

Then in the box below, select the type of threat(s) about which you want to be notified.

For example, if I lived in Tornado Alley, I would want to know when tornadic storms were coming. So, I would select government issued “Tornado Warnings” and “Tornado Watches.” I would also select “Heavy Rain” since government warnings are sometimes issued *after* a tornado has already touched down. This way, I would know for myself when heavy thunderstorms were inside my Perimeter, increasing the time I have to take precautions.

[Note: in the trial version some of the threat options may not be available]



Next, select how to receive the alerts. Some options include:

- Audible alarm or sound effect
- On-screen messages
- Or e-mail or SMS text message to your phone

(You can test the alert method by clicking the Test button.)

Then, click OK to save your settings.

You should now see your Perimeter on-screen, indicated by a green circle.

You may edit your Perimeter's settings by moving your mouse cursor over the center of the perimeter and selecting **Settings** on the menu.